



St Luke's C of E Primary School Newsletter

Friday 18th July 2025

www.stlukesprimary.org.uk
office@stlukesprimary.org.uk



Go, shine in
the world



Dear Parents and Carers,

We are delighted to share our school SIAMS report with you this week. SIAMS inspects how the school is living up to its foundation as a Church school and is enabling pupils and adults to flourish. As you will see, the inspector found many strengths in our school and this builds on Ofsted's finding that the quality of provision for children at St Luke's is Outstanding. Thank you to our children, staff, governors and St Luke's Church for all of their hard work and to parents for your continued support.

Best wishes, Mr Smith (Head of School) and Mr Webb (Executive Headteacher)

Class Teachers for September

We're pleased to confirm teachers for all classes next year. This has been updated since we first shared this. All classes have met their new teacher this week and are looking forward to seeing you again in September.

Reception	Mr Camilleri
Year 1	Ms Solomon
Year 2	Ms Galbraith
Year 3	Ms Ali
Year 4	Ms Lourey
Year 5	Mr Mival
Year 6	Mr O'Donoghue

Places at St Luke's– September 2025

We are proud that St Luke's has become the school of choice in the local area since it was rated 'Outstanding' by Ofsted. There are now many families who want their children to join.



We still have a few spaces available in some classes for September.

If you know other parents who would like their child to attend St Luke's, please encourage them to come in and see us.

Year 6's Production of The Lion King

Year 6 showed our values of **inspiration** and **excellence** through their amazing and confident performances in their production this week.



I have received and read the **St Luke's CE Primary School** newsletter of **18.07.25**

Name of child _____ Class _____

PLEASE RETURN THIS SLIP TO THE SCHOOL OFFICE AND YOUR CHILD MIGHT WIN A PRIZE :)

Important dates for your diary...



Monday 21st July—KS2 End of Year
Service at St Luke's church—parents and families
welcome (2.30pm)

Tuesday 22nd July—Last day of term (staggered end
of the day)

Autumn Term 2025 Dates

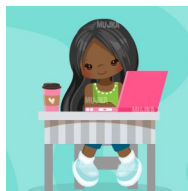
Tuesday 2nd September—Y1–Y6 pupils back at
school

Friday 12th September—Academic Review Day
(Appointment letters will go out to parents in
September. Reception class do not attend school for
this)

Thursday 11th September—Secondary Transfer
meeting for Y6 parents (3:40pm in the hall)

Holiday Homework

Holiday homework was given out today
for your child to do over the summer
holiday (if they would like to). This
homework is to stimulate your child's
interest in some of the science
curriculum they will be learning in the
Autumn term. We know many of our
children enjoy this homework and we are looking
forward to seeing what they create.



Person of the Week!

Reception - Robina

Year 1 - Amaya

Year 2 - Noah

Year 3 - Grace

Year 4 - Jeremiah

Year 5 - Mohamed

Year 6 - Chayce



Attendance...

Congratulations to **Year 1** who have been
awarded Luke, our Attendance Bear, for
having the **BEST ATTENDANCE** this week.

Year 1 had a class attendance of **98%**!

Please make sure your child is in school
every single day unless they are too
unwell to come to school.

A reminder that gates open
at **8:40am** and children
should be in school by
8:50am ready to start
their learning.



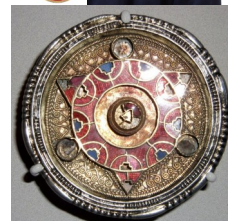
Work of the Week!

This week's brilliant piece of work
displayed in the school lobby is by
Oliver, in Year 4.

This term, Year 4 have been
exploring the fascinating
world of the Anglo-Saxons.

As part of their learning, the
children have been looking at
how archaeologists use
primary sources (such as
artefacts) to uncover details
about life in the past.

Oliver examined a range of
historical sources and
created his own thoughtful
analysis based on his
observations.



Well done, Oliver!



Our Prayer of the Week

Dear God,

For all those that feel sad and
lonely, hear our prayer.

For those who are rejected by friends, hear
our prayer.

For those in our community who
are unloved, hear our prayer.

Amen



Don't let a little worry turn into a big one...

If you or your child are worried about something or have any questions, please phone the
school office and book an appointment to see their class teacher, Mr Smith or Ms Marsham.

We are always really pleased to meet with you and chat things through.



Sports Day

We were disappointed that we weren't able to hold Key Stage 2 Sports Day as planned at Paddington Recreation Ground last week. Children enjoyed taking part in their rescheduled Sports Day in school this week. Thank you parents for being understanding of the typical British, changeable summertime weather. Please have a look at the photos below :)



Statutory Inspection of Anglican and Methodist Schools (SIAMS) Report

St Luke's Church of England Primary School, Kilburn

Vision

Go, shine in the world and live as Jesus lived. (Matthew 5: 14-16)

The vision is for all in the school community to flourish academically, socially, spiritually so that they can 'shine in the world' now and in the future where they can be economically independent adults who have all of life's opportunities and can make a contribution to society. Thus, the school vision complements the Church of England's vision to 'Serve the Common Good' and have 'life in all its fullness'.

St Luke's Church of England Primary School is living up to its foundation as a Church school and is enabling pupils and adults to flourish. It has the following notable strengths.

Strengths

- The school's Christian vision is a dynamic vehicle for academic and spiritual flourishing. Pupils and adults in this diverse school are empowered to 'shine', regardless of their backgrounds or starting points.
- Collective worship has status at St Luke's and is highly valued by the community. Opportunities for prayer and meditation are meaningful and pupils see them as important times of spiritual reflection, connection and calm.
- The school is a joyful and harmonious community. Pupils and adults experience highly positive relationships.
- Pupils demonstrate a strong understanding of justice and their own personal responsibility in being good citizens and advocates within their community.
- Religious education (RE) is a core and high-profile subject at the school. Pupils develop strong biblical literacy and a good knowledge of world faiths.

Development Points

- Embed a deeper understanding of spirituality across the curriculum so that pupils and adults can further flourish in their spiritual development.
- Strengthen strategic partnerships, to ensure that the school's collaboration with its link church and other community groups can be enhanced.



Inspection Findings

The school's Christian vision is transformational and is truly lived out. Leaders are committed to high standards and the growth of the school community. They remove barriers to learning for pupils, allowing them to achieve and develop well. Leaders and staff ensure a sense of belonging, deeply knowing each pupil. Pupils are supported to achieve well, regardless of their starting points. Pupils are given diverse learning opportunities. They are allowed to shine in their gifts and abilities. They are encouraged to explore different learning paths, with a focus on future learning, whether that be university or vocational careers. Staff development is prioritised, with termly professional meetings and career progression opportunities, fostering a common vision across the federation. The school's Christian values are integral, promoting respect, acceptance and tolerance. Staff dedication to nurturing the most vulnerable is very strong. Pupils understand their worth and meaningful contribution to society. They flourish academically, socially and spiritually.

In line with the vision, the curriculum is comprehensive. Adaptations, including specialist training for visually impaired students, ensure pupils can access learning. A plethora of enriching experiences, such as musical concerts and trips to places like Westminster Abbey and Hampstead Heath, broaden pupils' horizons. Pupils participate in a large range of extra-curricular activities, including music lessons, coding, swimming and a number of sports. New skills are constantly developed. The school fosters a deep love for learning. Pupils are inspired by their learning at school and enjoy continuing this at home. Parents are actively engaged in this school-home partnership. Parents rightly value curriculum presentations which the school facilitates. Topics such as mental health, dealing with frustration and nutrition are covered. The school partners effectively with parents in their child's education. Year 6 pupils receive guidance on being good citizens, supported by workshops on knife and gun crime prevention and anti-radicalisation. There is an awareness of spiritual development and how this is integrated into the curriculum. However, this meaningful work on spiritual development is not yet totally embedded. Within the curriculum, pupils with special educational needs and/or disabilities are fully included, with tailored support and interventions.

Collective worship plays a pivotal role in nurturing the spiritual growth of both pupils and adults. Pupils' understanding and experience of faith is enriched during worship and a sense of mutual respect is developed. Through a partnership with the local church, the school community actively participates in weekly services, engaging with biblical teachings and themed stories that Jesus shared. These stories inspire pupils to action. For example, the biblical story of 'The Good Samaritan' underpins anti-bullying initiatives which pupils support passionately because of a rich theological understanding. Regular acts of worship, deeply rooted in familiar liturgy, fosters a strong sense of belonging and spiritual enrichment among pupils and adults alike. Prayers and Christian meditation, woven into the curriculum, provide invaluable moments for personal reflection and connection with God. Pupils are encouraged to lead and express themselves during worship. This enhances their spiritual development and sense of responsibility. Parents are warmly invited to join in key services such as Christmas, Easter and Harvest. This school's community benefits from the church's teachings, which emphasise the worth and value of every individual, regardless of faith or background. However, the school's links with the local church and other faith groups are not fully utilised.

The school, through its powerful vision, creates a nurturing environment where respect and kindness are paramount for both pupils and adults. The school celebrates diversity, showing pupils different ways of living and 'shining in the world'. Pupils learn courtesy, respect, politeness, and behaviour through 'golden rules' and reconciliation. Inspired by biblical teachings, this community marked is marked by love and care. Pupils are



nurtured to become confident individuals. They feel supported and their mental and emotional well-being are a priority for school leaders, just as much as their academic flourishing. Adults play an essential role in maintaining this supportive atmosphere. The pupils' enthusiasm and positive attitudes toward their school are a testament to the nurturing environment provided. The school community values weekly celebration assemblies where notable achievements, in line with the school's vision and values, are acknowledged. The core message that making mistakes is acceptable, as long as one learns from them, is consistently taught and reinforced. The student trust group, who pupils can speak to for emotional and social support, exemplifies responsibility and collaboration. It is always ready to lend a helping hand whenever needed. The school also organises community events such as fairs and cultural festivals. These strengthen the bond between pupils, families and the wider community.

The school's unwavering commitment to justice is palpable. Initiatives such as donating to food banks and supporting Christian Aid underscore their dedication to the common good. Through these efforts, pupils develop into advocates ready to effect positive change in the world. Special project weeks of learning focus on areas such as gender and racial equality, freedom of faith and safety. Pupils have a strong sense of justice. They write to the local MP about tackling climate change and to firms about fair working practices. They understand their responsibility as citizens of the community. They have a desire to improve conditions for those who experience great economic and social challenges. The school council plays a crucial role, promoting environmentally friendly practices, such as the introduction of a bike rack and the encouragement of e-scooter use. Pupils gain invaluable insights from various workshops focused on safety, respect and social justice. These sessions, conducted by organisations like Transport for London and the Metropolitan Police, equip pupils well. They give them the knowledge and skills needed to navigate real-world situations responsibly. The school also fosters partnerships with local businesses, offering pupils real-world experiences and mentorship opportunities. This further enriches their education and prepares them to 'shine in the world'.

RE is highly effective. Pupils engage deeply with scripture, making meaningful connections with other faiths. Their understanding of world religions is strong and they value the diversity of worldviews explored. 'Big questions' encourage pupils to think deeply. Enriching trips and visits, such as a Judaism workshop and visits to Westminster Abbey, provide valuable learning opportunities. Staff and other adults, including parents, enrich pupils' understanding of diverse faiths by sharing expert knowledge.

The quality of teaching is of a high standard. Teachers receive comprehensive training and background knowledge and are supported through coaching. The assessment system is strong. It informs planning, is creative and allows pupils to review their learning in various ways. Pupils make very strong progress in RE.

Information

Address	Fernhead Road, London W9 3EJ		
Date of inspection	Tuesday 1 July 2025	URN	101134
Type of school	Voluntary aided primary	No. of pupils	173
Diocese	London		
MAT/Federation	Go Shine Church of England Federation		
Headteacher	Paul Smith (Head of School); Harvey Webb (Executive Headteacher)		
Chair of Governors	Judy Powell		
Inspector	Andrew Wignal		